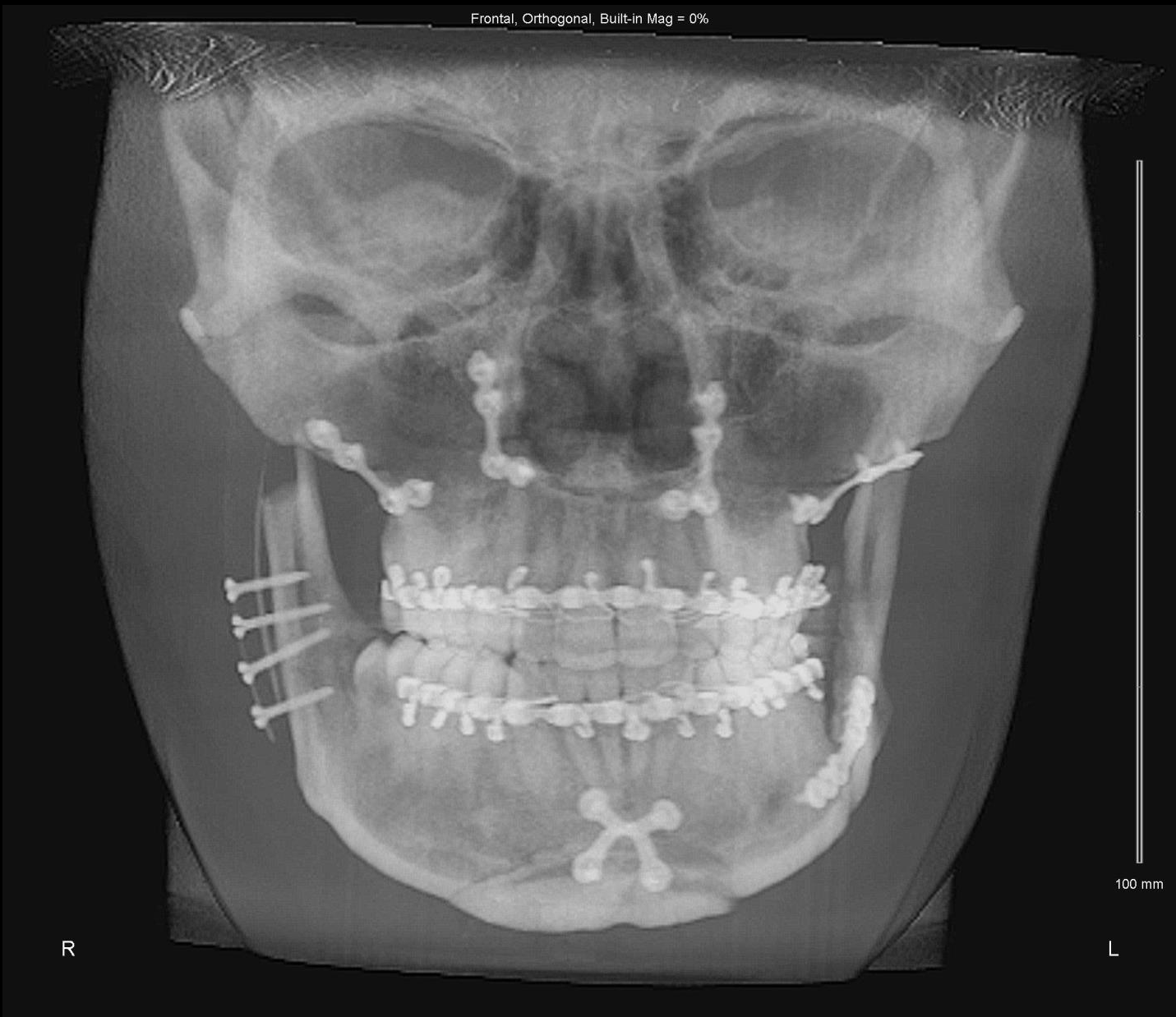


Frontal, Orthogonal, Built-in Mag = 0%

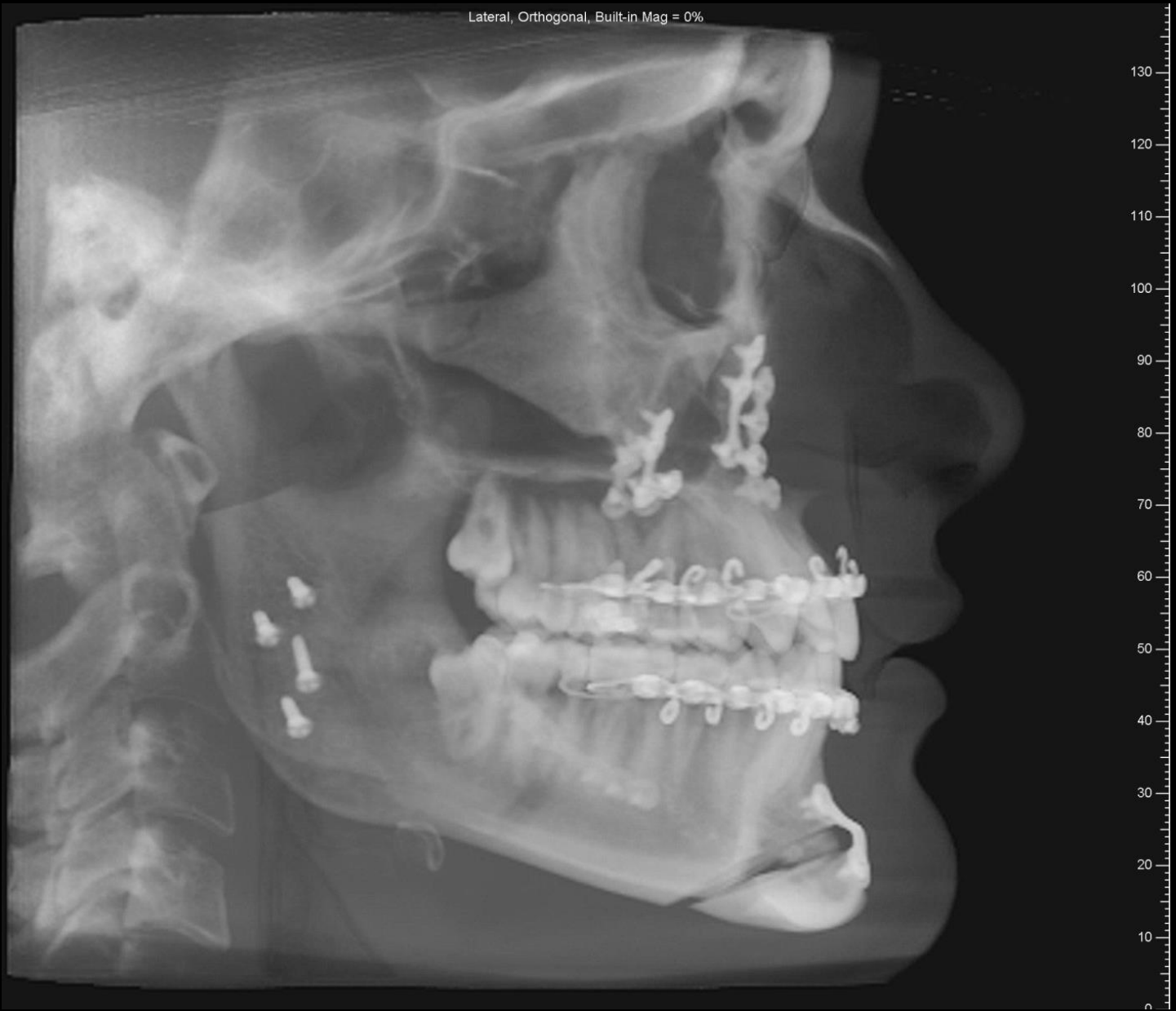


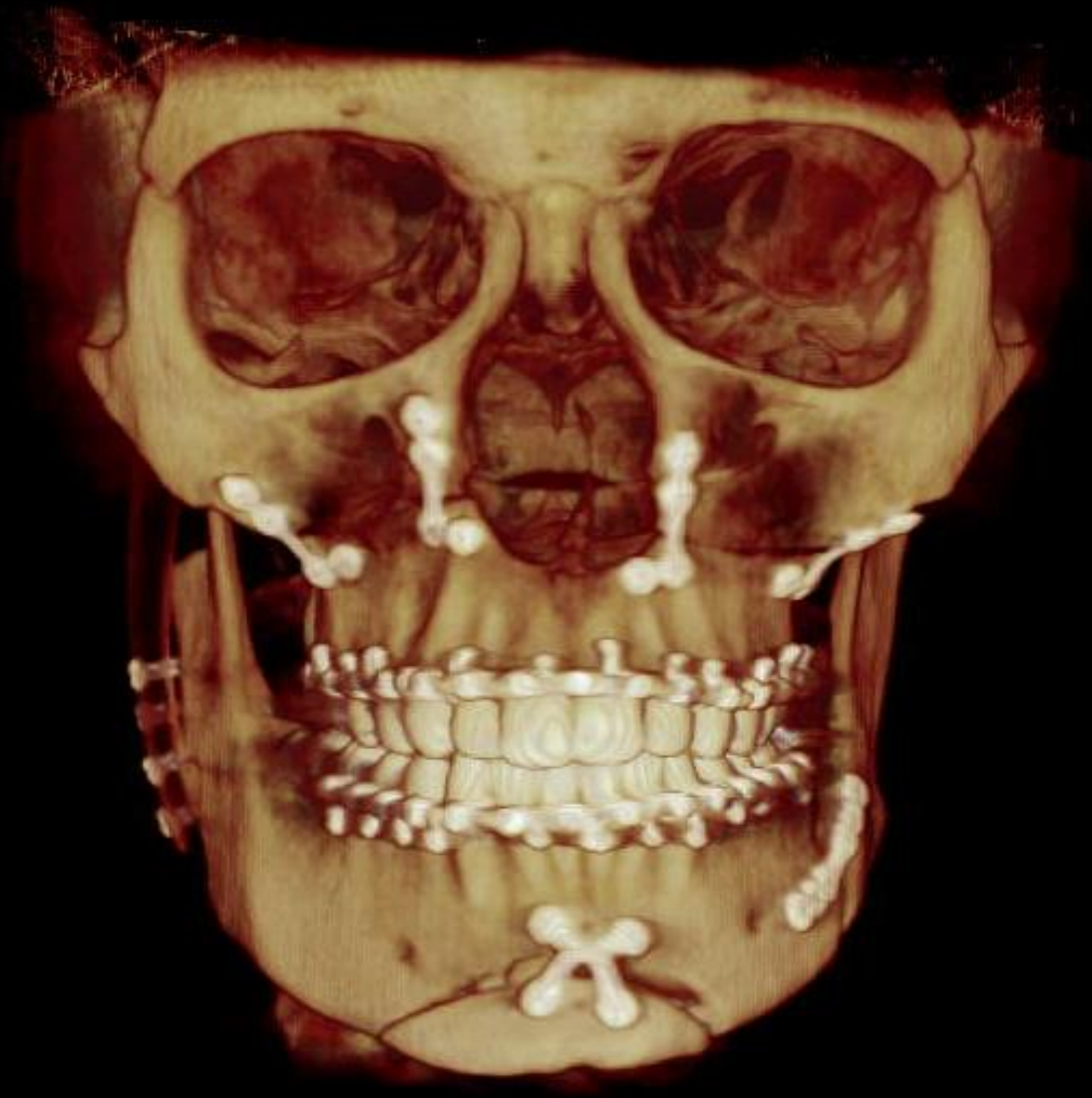
100 mm

R

L

Lateral, Orthogonal, Built-in Mag = 0%











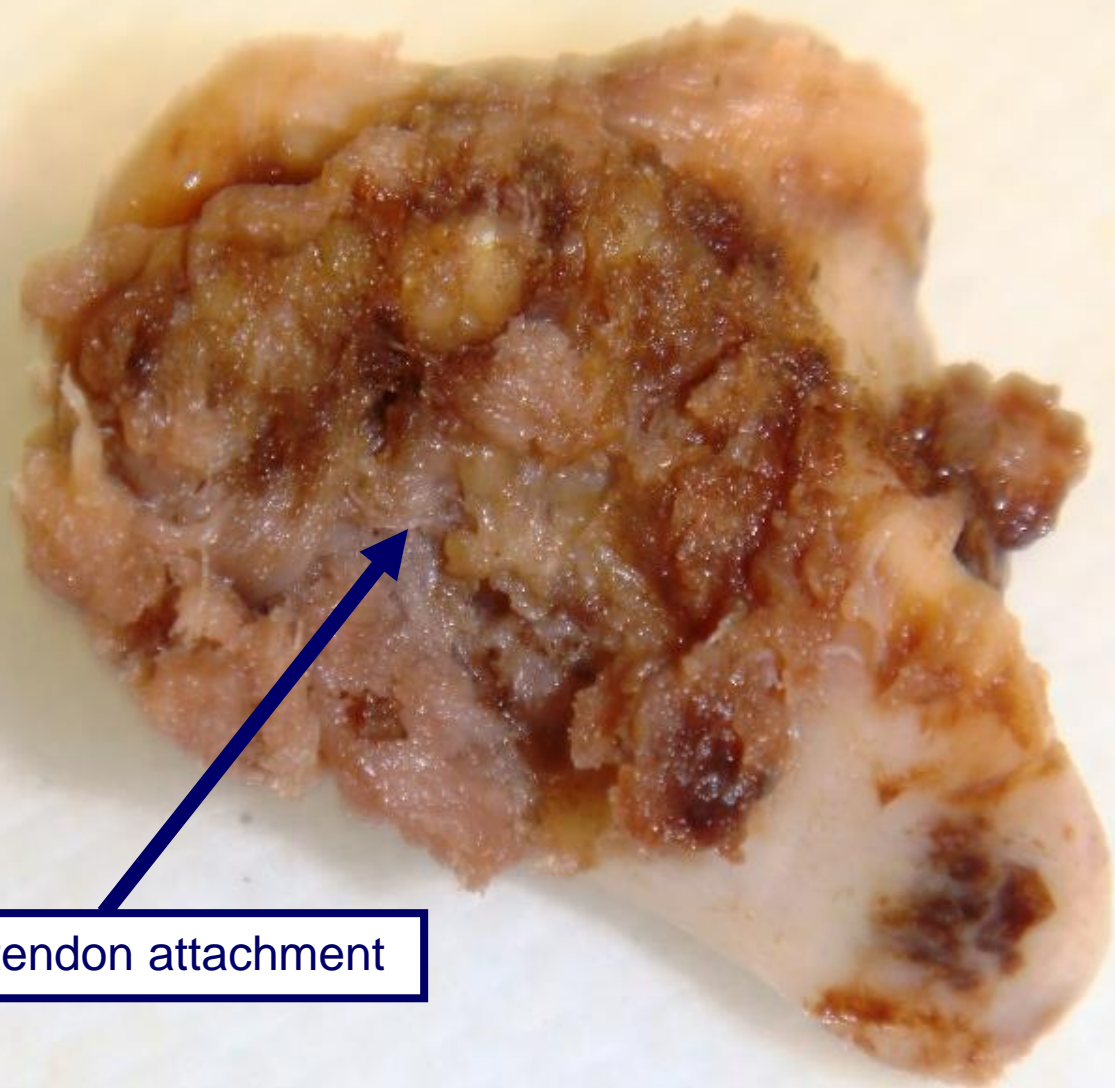


facial/buccal





superior/lateral

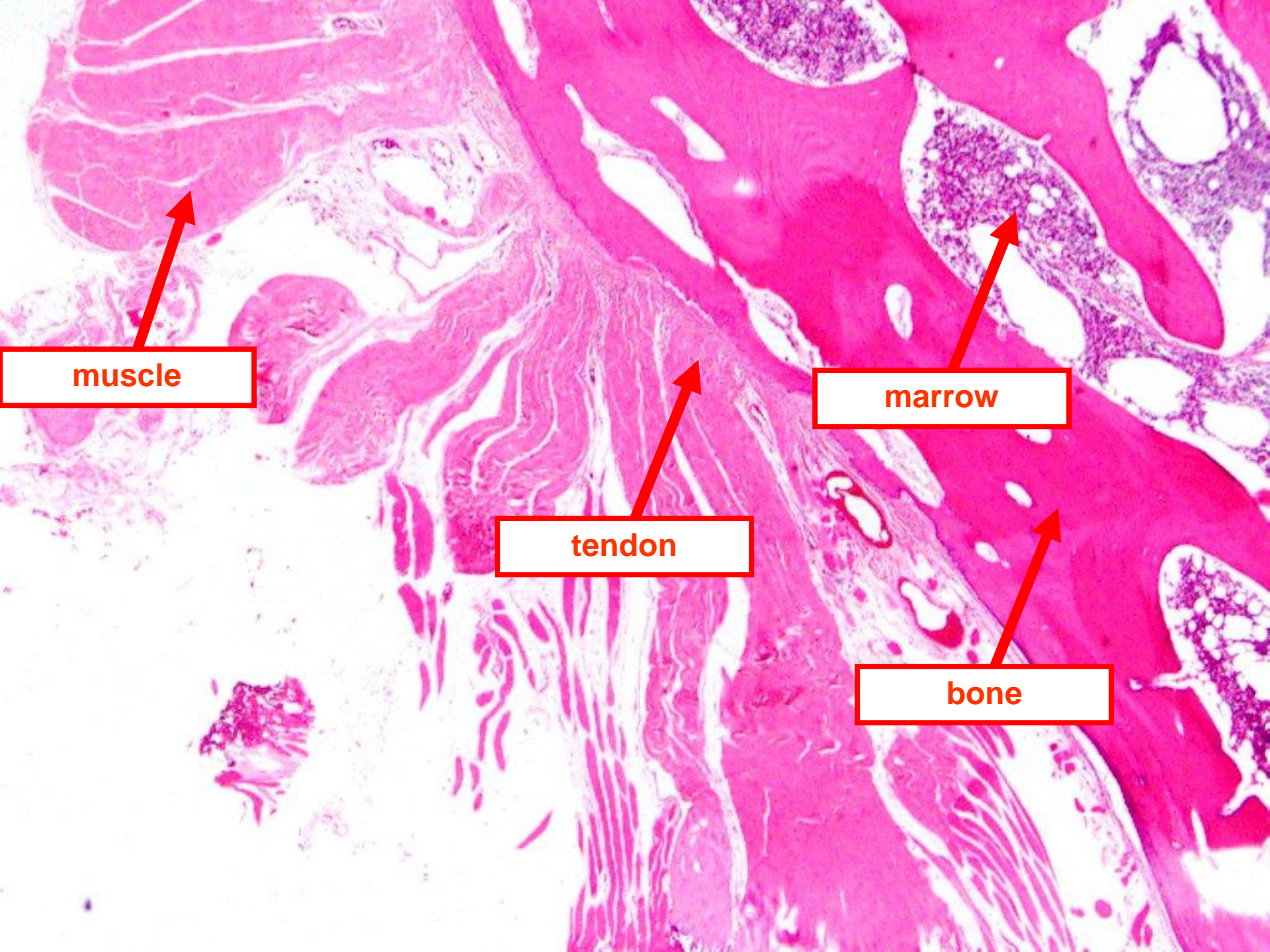


muscle/tendon attachment

medial/inferior



hemisected (grossly demonstrating marrow space)



**muscle**

**tendon**

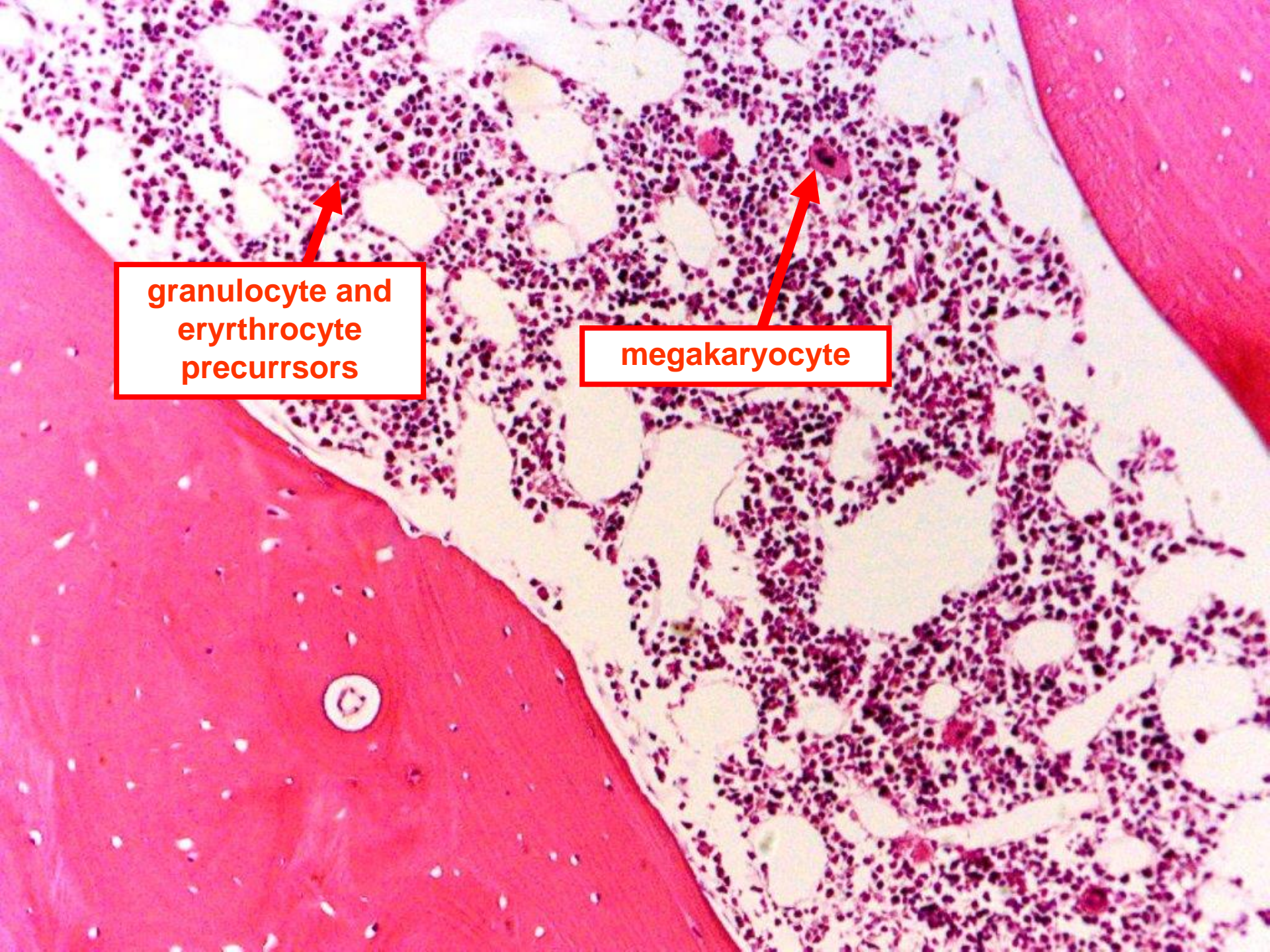
**marrow**

**bone**



marrow





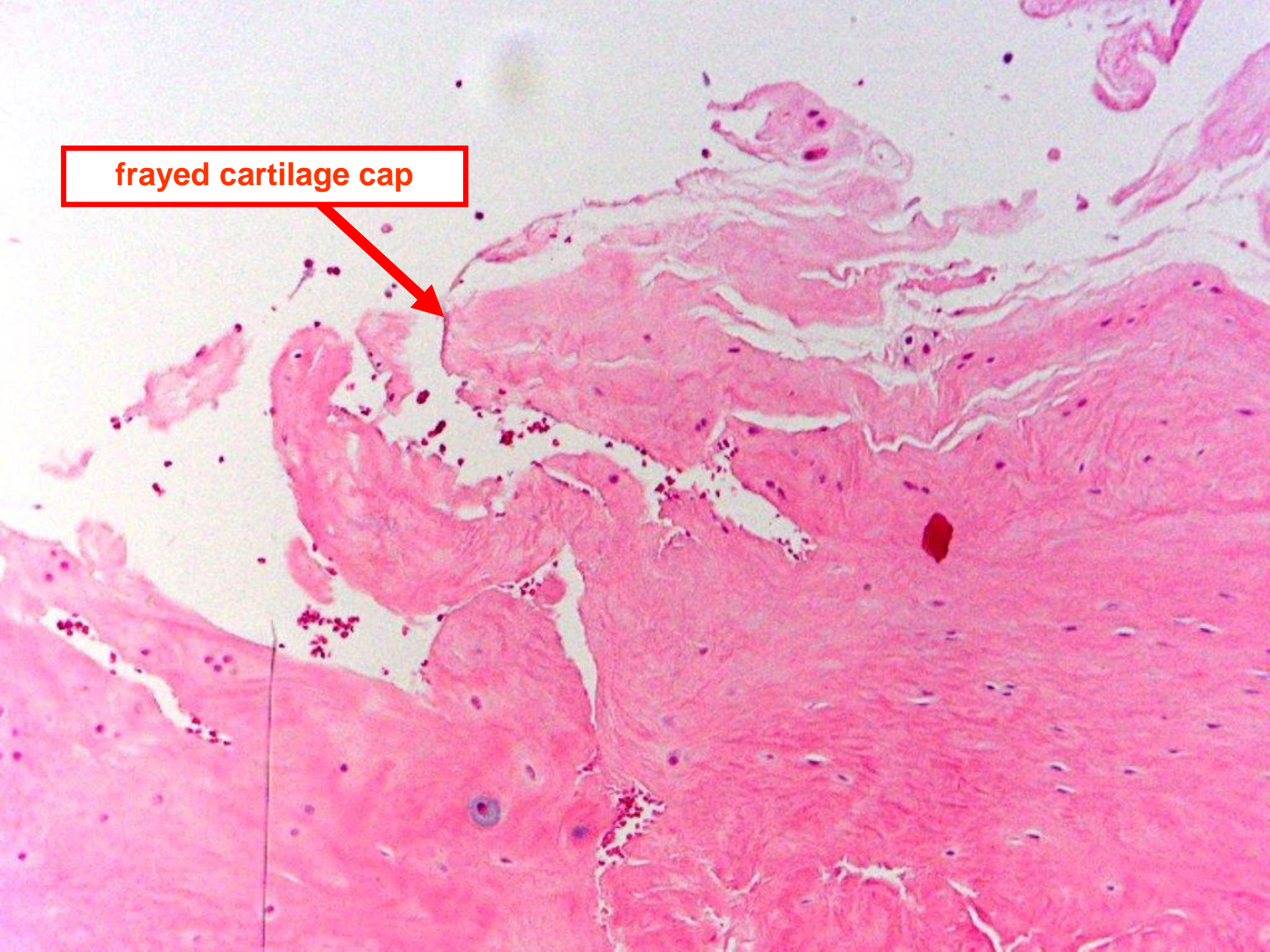
granulocyte and  
erythrocyte  
precursors

megakaryocyte

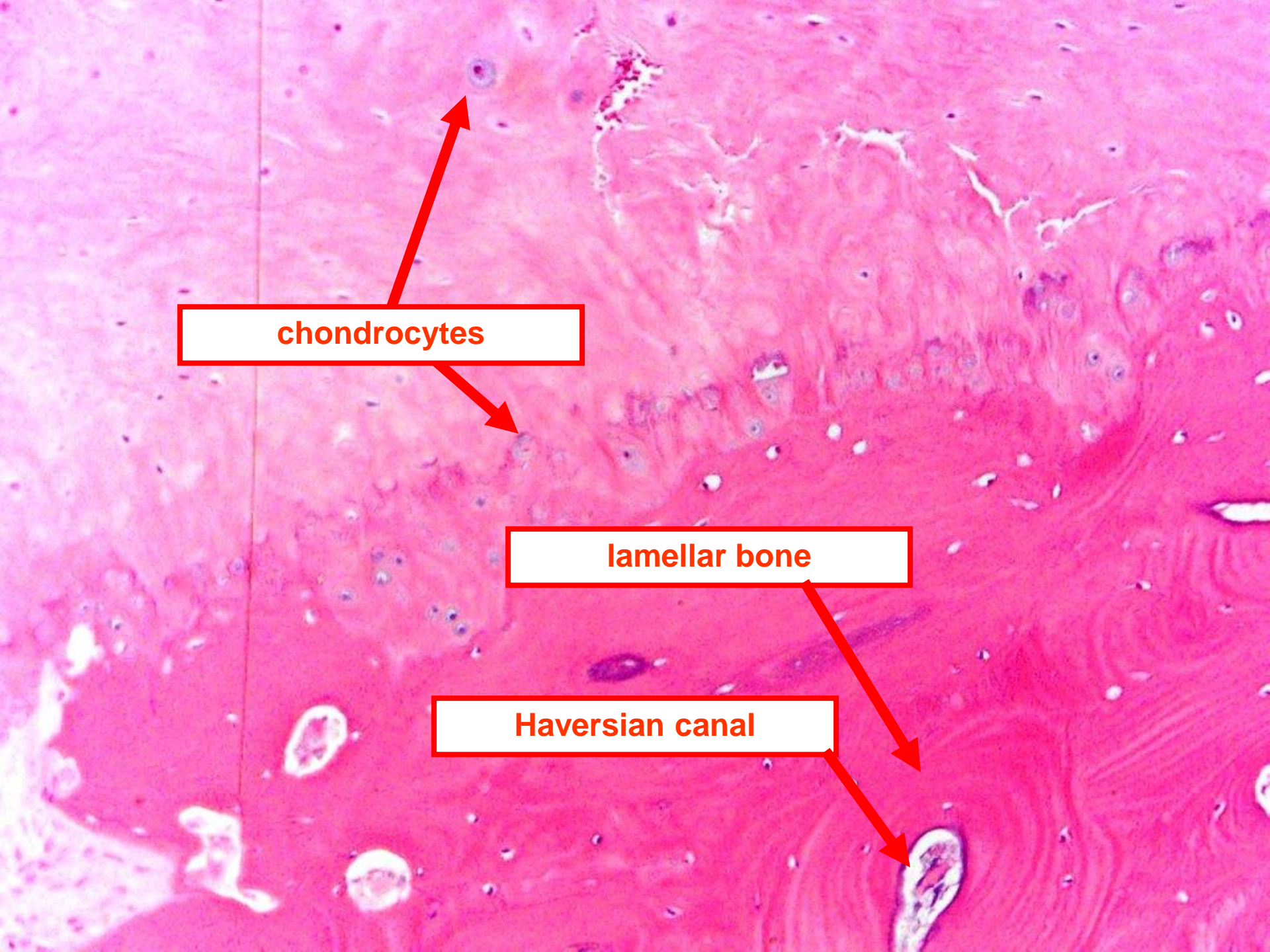
frayed cartilage cap



frayed cartilage cap







**chondrocytes**

**lamellar bone**

**Haversian canal**